

The pocket-book is 6.5in. tall, 4in. wide and about 0.75in. thick. It is called "The Daily Journal; or, the Gentleman's, Merchant's and Tradesman's Complete Annual Accompt-Book for the Pocket or Desk" and was printed and sold by R. Baldwin, G. Robinson, and S. Crowder of F. Power and Co. It is bound with a single sheet of paper-backed red leather and secured on the back with a tuck-in flap.

The pocket-book has gold-edged pages and is a combination of notebook, diary and almanac. The first 13 pages were supplied blank for notes, then 8 with pre-printed reference material, the second page of which was blank. The next 108 were pre-printed for daily diary notes plus some memoranda, and then 58 more with pre-printed reference material, from which one leaf is missing. The missing leaf, locally numbered "( 35 )" and "( 36 )", holds the final part of the list of earls and the first part of the list of marquisses. Finally are 17 more pages supplied blank for notes.

Inside each cover is a document pocket, and the front one contains the silhouette of Henry Man on card (imaged as '000 1 Henry Man in silhouette.jpg'). Both end-papers are marbled and have not been scanned.

A hand-written identification label had been glued onto the centre of the front cover and has been scanned in as image '000 2 front cover label.jpg'. The label was made from the torn-off corner of a 20th. century economy label of the "Repton" brand, printed by Geerings of Ashford, Kent. This firm still trades from that address, but no longer prints stationery.

Images of open pairs of pages have been scanned in and serially numbered (001.JPG to 101.JPG). When one half of an image is being considered, i.e., attention is being given to only one of the pages, the image number is suffixed with L(ef) or R(ight).

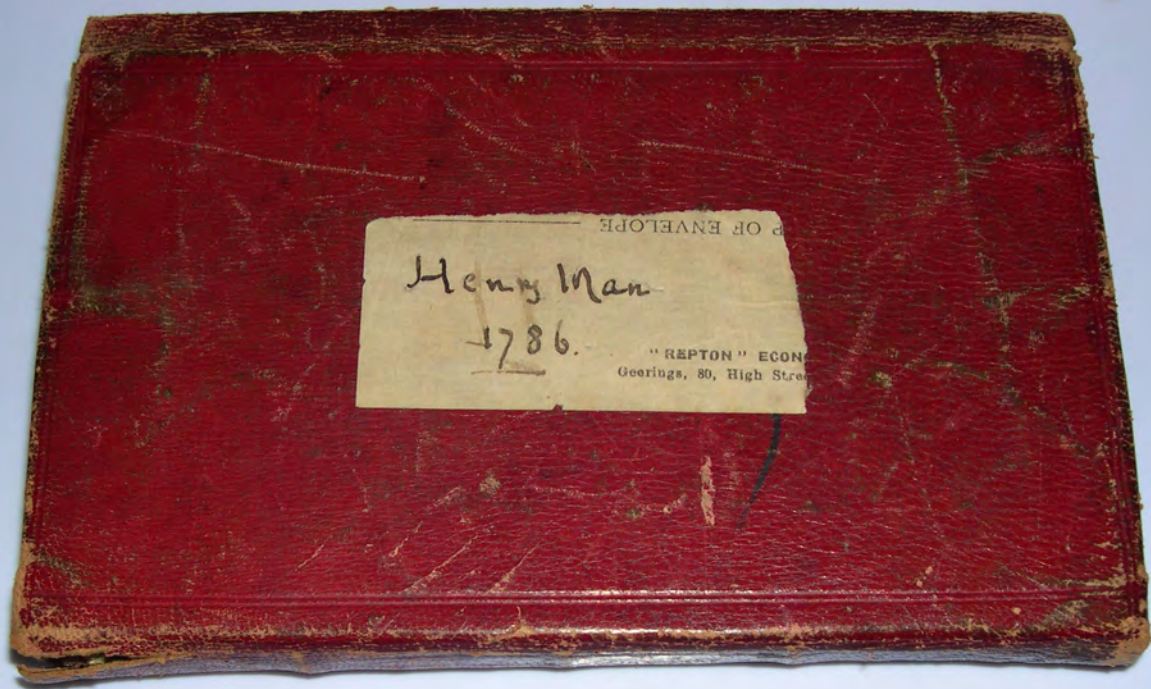
Written in either ink or pencil, many pages carry hand-written text or a sketch. Some show traces of erased pencil, still partly legible, some of which have been overwritten with something different, though a few have the pencil overwritten with the same text in ink.

The first twelve blank pages (001R to 007L) and the sixteen final ones (093R to 101L) are of heavier paper than the interior pages (007R to 093L). On many of the latter type the watermark is clearly visible, of which the image '000 4 watermark.jpg' is a sample.

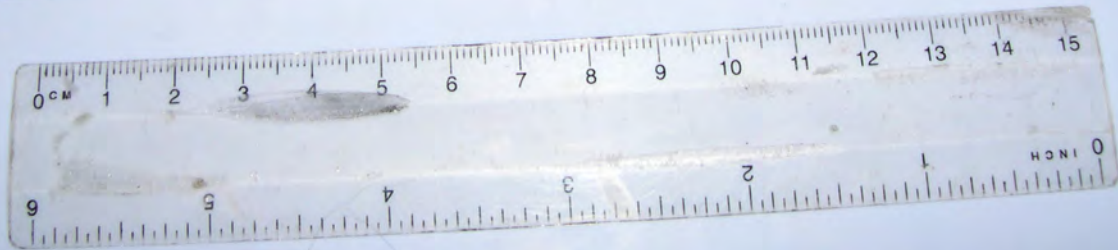
At the time that the pocket-book was in use English pencils' 'lead' were made from sawn graphite block from Cumbria. German makers had recently developed a composite material, but, without testing, it is presumed that the English is the type that was used here.

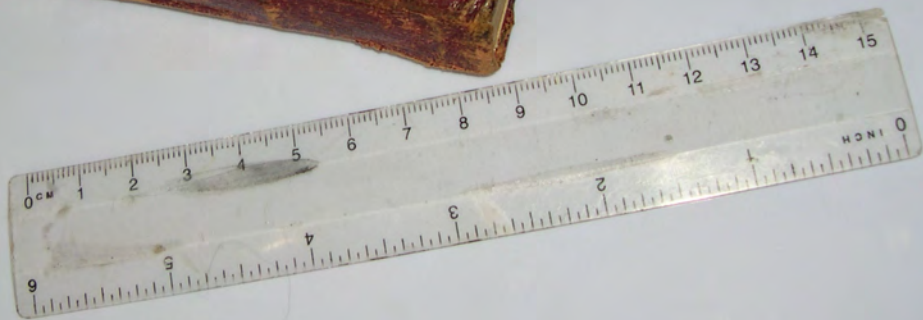
At the time that the pocket-book was in use the erasure of pencil was usually done using bread from the soft interior of the loaf. Mr. Naime's unvulcanised rubber eraser had also become available a few years previously, and no attempt has yet been made to determine how that pencil was erased in the pocket-book.

Pages are catalogued in '000 5 page summary.pdf'. Each page with hand-written or drawn content is also individually transcribed in a separate document, '102 Handwritten pieces.pdf', and modern forensic methods should be able to recover more of the erased detail, if required. In both these documents italic script denotes uncertainty. Scanning has been done at a high enough density to zoom down to resolve individual fibres in the paper.



OF ENVELOPE  
Henry Man  
1786.  
"REPTON" ECON  
Georings, 80, High Street











| Henry Man's 1786 pocket-book: analysis by page  |      |                  |              |                |           |         |                             |   |                         |
|---|------|------------------|--------------|----------------|-----------|---------|-----------------------------|---|-------------------------|
| <i>The Daily Journal; or, the Gentleman's, Merchant's and Tradesman's Complete Annual Accompt-Book for the Pocket or Desk</i> |      |                  |              |                |           |         |                             |   |                         |
| Page-pair   | Side | Page description | Pre-printed? | Erased pencil? | Un erased |         | Legibility factors          | Content comments                              | Hand-written parts ref. |
|   |      |                  |              |                | ink?      | pencil? |                             |   |                         |
| 000   | --   | front cover      |              |                | yes       |         |                             | home-made label glued on                      | 000 label               |
| 001   | L    | front note       |              |                |           |         |                             |   |                         |
|   | R    | front note       |              | yes            | yes       |         |                             | un erased pencil in 20th. Century explanation | 001R                    |
| 002   | L    | front note       |              | yes            | yes       |         | offset from R               | interim calculations                          | 002L                    |
|   | R    | front note       |              | yes            | yes       |         |                             | accounting: BF from elsewhere; CF to next     |                         |
| 003   | L    | front note       |              | yes            | yes       |         |                             | accounting: BF from previous; CF to next      | 002R to 003R            |
|   | R    | front note       |              | yes            | yes       |         | offset from L               | accounting: BF from previous; no CF           |                         |
| 004   | L    | front note       |              | yes            |           |         |                             |   | 004L                    |
|   | R    | front note       |              |                |           |         |                             |   |                         |
| 005   | L    | front note       |              |                |           |         |                             |   |                         |
|   | R    | front note       |              |                |           | yes     | see through                 | ground-plan of "Beaufoy"                      | 005R                    |
| 006   | L    | front note       |              | yes            | yes       |         | offset from R               |   | 006L                    |
|   | R    | front note       |              | yes            | yes       |         |                             |   | 006R                    |
| 007   | L    | front note       |              | yes            |           |         | offset from R               |   | 007L                    |
|   | R    | title            | yes          |                |           |         |                             |   |                         |
| 008   | L    | front note       |              |                |           |         | offset from R               |   |                         |
|   | R    | law term table   | yes          |                |           |         |                             |   |                         |
| 009   | L    | year index       | yes          |                |           |         |                             |   |                         |
|   | R    | year index       | yes          |                |           |         |                             |   |                         |
| 010   | L    | moon phases      | yes          |                |           |         |                             |   |                         |
|   | R    | bank capital     | yes          |                |           |         |                             |   |                         |
| 011   | L    | London bankers   | yes          |                |           |         |                             |   |                         |
|   | R    | year-start memo  | yes          |                |           | yes     |                             |   | 011R                    |
| 012   | L    | diary first day  | yes          | yes            |           | yes     |                             |   | 012L                    |
|   | R    | diary week 1     | yes          |                |           |         | see through                 |   |                         |
| 013   | L    | diary week 2 A   | yes          | yes            |           | yes     |                             |   | 013L                    |
|   | R    | diary week 2 B   | yes          |                |           |         |                             |   |                         |
| 014   | L    | diary week 3 A   | yes          |                |           | yes     |                             |   | 014L                    |
|   | R    | diary week 3 B   | yes          |                |           | yes     |                             |   | 014R                    |
| 015   | L    | diary week 4 A   | yes          | yes            |           | yes     |                             |   | 015L                    |
|   | R    | diary week 4 B   | yes          | yes            |           | yes     |                             |   | 015R                    |
| 016   | L    | diary week 5 A   | yes          | yes            |           | yes     |                             |   | 016L                    |
|   | R    | diary week 5 B   | yes          | yes            |           | yes     |                             |   | 016R                    |
| 017   | L    | diary week 6 A   | yes          | yes            |           | yes     |                             |   | 017L                    |
|   | R    | diary week 6 B   | yes          | yes            |           | yes     |                             |   | 017R                    |
| 018   | L    | diary week 7 A   | yes          | yes            |           |         |                             |   | 018L                    |
|   | R    | diary week 7 B   | yes          |                |           |         |                             |   |                         |
| 019   | L    | diary week 8 A   | yes          |                |           |         |                             |   |                         |
|   | R    | diary week 8 B   | yes          |                |           |         |                             |   |                         |
| 020   | L    | diary week 9 A   | yes          |                | yes       |         |                             |   | 020L                    |
|   | R    | diary week 9 B   | yes          |                |           |         | see through                 |   |                         |
| 021   | L    | diary week 10 A  | yes          |                | yes       |         |                             |   | 021L                    |
|   | R    | diary week 10 B  | yes          |                |           |         |                             |   |                         |
| 022   | L    | diary week 11 A  | yes          |                |           |         |                             |   |                         |
|   | R    | diary week 11 B  | yes          |                |           |         |                             |   |                         |
| 023   | L    | diary week 12 A  | yes          |                | yes       |         |                             |   | 023L                    |
|   | R    | diary week 12 B  | yes          |                |           |         |                             |   |                         |
| 024   | L    | diary week 13 A  | yes          |                |           | yes     |                             |   | 024L                    |
|   | R    | diary week 13 B  | yes          |                |           | yes     |                             |   | 024R                    |
| 025   | L    | diary week 14 A  | yes          | yes            | yes       |         |                             |   | 025L                    |
|   | R    | diary week 14 B  | yes          |                |           |         | offset from L & see through |   |                         |
| 026   | L    | diary week 15 A  | yes          |                | yes       |         |                             | cross-out                                     | 026L                    |
|   | R    | diary week 15 B  | yes          |                |           |         | offset from L & see through |   |                         |
| 027   | L    | diary week 16 A  | yes          |                | yes       |         |                             |   | 027L                    |
|   | R    | diary week 16 B  | yes          |                |           |         | offset from L               |   |                         |
| 028   | L    | diary week 17 A  | yes          | yes            | yes       |         | offset from R               |   | 028L                    |
|   | R    | diary week 17 B  | yes          | yes            |           |         |                             |   | 028R                    |
| 029   | L    | diary week 18 A  | yes          | yes            |           |         |                             |   | 029L                    |
|   | R    | diary week 18 B  | yes          | yes            |           |         |                             |   | 029R                    |

| Henry Man's 1786 pocket-book: analysis by page  |      |                  |              |                |           |         |                             |                  |                         |
|---|------|------------------|--------------|----------------|-----------|---------|-----------------------------|------------------|-------------------------|
| <i>The Daily Journal; or, the Gentleman's, Merchant's and Tradesman's Complete Annual Accompt-Book for the Pocket or Desk</i> |      |                  |              |                |           |         |                             |                  |                         |
| Page-pair   | Side | Page description | Pre-printed? | Erased pencil? | Un erased |         | Legibility factors          | Content comments | Hand-written parts ref. |
|   |      |                  |              |                | ink?      | pencil? |                             |                  |                         |
| 030   | L    | diary week 19 A  | yes          | yes            | yes       |         |                             |                  | 030L                    |
|   | R    | diary week 19 B  | yes          | yes            | yes       |         |                             |                  | 030R                    |
| 031   | L    | diary week 20 A  | yes          | yes            | yes       |         |                             |                  | 031L                    |
|   | R    | diary week 20 B  | yes          |                | yes       |         | offset from L & see through |                  | 031R                    |
| 032   | L    | diary week 21 A  | yes          |                | yes       |         | see through                 |                  | 032L                    |
|   | R    | diary week 21 B  | yes          |                |           |         | offset from L               |                  |                         |
| 033   | L    | diary week 22 A  | yes          | yes            | yes       |         |                             |                  | 033L                    |
|   | R    | diary week 22 B  | yes          |                |           |         |                             |                  |                         |
| 034   | L    | diary week 23 A  | yes          |                |           |         |                             |                  |                         |
|   | R    | diary week 23 B  | yes          |                |           |         |                             |                  |                         |
| 035   | L    | diary week 24 A  | yes          |                |           |         |                             |                  | 035L                    |
|   | R    | diary week 24 B  | yes          |                |           |         | see through                 |                  |                         |
| 036   | L    | diary week 25 A  | yes          | yes            |           |         |                             | later hand?      | 036L                    |
|   | R    | diary week 25 B  | yes          |                |           |         | see through                 |                  |                         |
| 037   | L    | diary week 26 A  | yes          |                | yes       |         |                             |                  | 037L                    |
|   | R    | diary week 26 B  | yes          |                |           |         | offset                      |                  |                         |
| 038   | L    | diary week 27 A  | yes          | yes            |           |         |                             |                  | 038L                    |
|   | R    | diary week 27 B  | yes          |                |           |         |                             |                  |                         |
| 039   | L    | diary week 28 A  | yes          |                |           |         |                             |                  |                         |
|   | R    | diary week 28 B  | yes          |                |           |         |                             |                  |                         |
| 040   | L    | diary week 29 A  | yes          |                |           |         |                             |                  |                         |
|   | R    | diary week 29 B  | yes          |                |           |         |                             |                  |                         |
| 041   | L    | diary week 30 A  | yes          |                |           |         |                             |                  |                         |
|   | R    | diary week 30 B  | yes          |                |           |         |                             |                  |                         |
| 042   | L    | diary week 31 A  | yes          |                |           |         |                             |                  |                         |
|   | R    | diary week 31 B  | yes          |                |           |         |                             |                  |                         |
| 043   | L    | diary week 32 A  | yes          |                |           |         |                             |                  |                         |
|   | R    | diary week 32 B  | yes          |                |           |         |                             |                  |                         |
| 044   | L    | diary week 33 A  | yes          |                |           |         |                             |                  |                         |
|   | R    | diary week 33 B  | yes          |                |           |         |                             |                  | 044R                    |
| 045   | L    | diary week 34 A  | yes          |                |           |         |                             |                  |                         |
|   | R    | diary week 34 B  | yes          |                |           |         |                             |                  |                         |
| 046   | L    | diary week 35 A  | yes          |                |           |         |                             |                  |                         |
|   | R    | diary week 35 B  | yes          |                |           |         |                             |                  |                         |
| 047   | L    | diary week 36 A  | yes          |                |           |         |                             |                  |                         |
|   | R    | diary week 36 B  | yes          |                |           |         |                             |                  |                         |
| 048   | L    | diary week 37 A  | yes          | yes            |           | yes     |                             |                  | 048L                    |
|   | R    | diary week 37 B  | yes          |                |           |         |                             |                  |                         |
| 049   | L    | diary week 38 A  | yes          |                |           |         |                             |                  |                         |
|   | R    | diary week 38 B  | yes          |                |           |         |                             |                  |                         |
| 050   | L    | diary week 39 A  | yes          |                |           |         |                             |                  |                         |
|   | R    | diary week 39 B  | yes          |                |           |         |                             |                  |                         |
| 051   | L    | diary week 40 A  | yes          |                |           |         |                             |                  |                         |
|   | R    | diary week 40 B  | yes          |                |           |         |                             |                  | 051R                    |
| 052   | L    | diary week 41 A  | yes          |                |           |         |                             |                  |                         |
|   | R    | diary week 41 B  | yes          |                |           |         |                             |                  |                         |
| 053   | L    | diary week 42 A  | yes          |                |           |         |                             |                  |                         |
|   | R    | diary week 42 B  | yes          |                |           |         |                             |                  |                         |
| 054   | L    | diary week 43 A  | yes          |                |           |         |                             |                  |                         |
|   | R    | diary week 43 B  | yes          |                |           |         |                             |                  |                         |
| 055   | L    | diary week 44 A  | yes          |                | yes       |         |                             |                  | 055L                    |
|   | R    | diary week 44 B  | yes          |                | yes       |         | offset from A & see through |                  | 055R                    |
| 056   | L    | diary week 45 A  | yes          |                | yes       |         | see through                 |                  | 056L                    |
|   | R    | diary week 45 B  | yes          |                |           |         | offset from A & see through |                  |                         |
| 057   | L    | diary week 46 A  | yes          | yes            | yes       |         |                             |                  | 057L                    |
|   | R    | diary week 46 B  | yes          | yes            | yes       |         |                             |                  | 057R                    |
| 058   | L    | diary week 47 A  | yes          |                | yes       |         | see through                 |                  | 058L                    |
|   | R    | diary week 47 B  | yes          |                |           |         |                             |                  |                         |
| 059   | L    | diary week 48 A  | yes          |                |           |         |                             |                  |                         |
|   | R    | diary week 48 B  | yes          |                |           |         |                             |                  |                         |

| Henry Man's 1786 pocket-book: analysis by page  |      |                  |              |                |          |         |                    |                                     |                         |
|---|------|------------------|--------------|----------------|----------|---------|--------------------|-------------------------------------|-------------------------|
| <i>The Daily Journal; or, the Gentleman's, Merchant's and Tradesman's Complete Annual Accompt-Book for the Pocket or Desk</i> |      |                  |              |                |          |         |                    |                                     |                         |
| Page-pair   | Side | Page description | Pre-printed? | Erased pencil? | Unerased |         | Legibility factors | Content comments                    | Hand-written parts ref. |
|   |      |                  |              |                | ink?     | pencil? |                    |                                     |                         |
| 060   | L    | diary week 49 A  | yes          |                |          |         |                    |                                     |                         |
|   | R    | diary week 49 B  | yes          |                |          |         | see through        |                                     |                         |
| 061   | L    | diary week 50 A  | yes          |                |          |         | offset from B      |                                     |                         |
|   | R    | diary week 50 B  | yes          |                | yes      |         |                    |                                     | 061R                    |
| 062   | L    | diary week 51 A  | yes          |                |          |         | offset from B      |                                     |                         |
|   | R    | diary week 51 B  | yes          |                | yes      |         |                    |                                     | 062R                    |
| 063   | L    | diary week 52 A  | yes          | yes            | yes      |         | see through        | some crossed out                    | 063L                    |
|   | R    | diary week 52 B  | yes          | yes            | yes      |         | foot cut away!     |                                     | 063R                    |
| 064   | L    | year-end memo    | yes          | yes            |          |         | foot cut away!     |                                     | 064L                    |
|   | R    | economy essay    | yes          |                |          | yes     |                    |                                     | 064R                    |
| 065   | L    | economy essay    | yes          |                |          |         |                    |                                     |                         |
|   | R    | economy essay    | yes          |                |          |         |                    |                                     |                         |
| 066   | L    | tables           | yes          |                |          |         |                    |                                     |                         |
|   | R    | tables           | yes          |                |          |         |                    |                                     |                         |
| 067   | L    | tables           | yes          |                |          |         |                    |                                     |                         |
|   | R    | tables           | yes          |                |          |         |                    |                                     |                         |
| 068   | L    | tables           | yes          |                |          |         |                    |                                     |                         |
|   | R    | tables           | yes          |                |          |         |                    |                                     |                         |
| 069   | L    | tables           | yes          |                |          |         |                    |                                     |                         |
|   | R    | tables           | yes          |                |          |         |                    |                                     |                         |
| 070   | L    | tables           | yes          |                |          |         |                    |                                     |                         |
|   | R    | tables           | yes          |                |          |         |                    |                                     |                         |
| 071   | L    | tables           | yes          |                |          |         |                    |                                     |                         |
|   | R    | tables           | yes          |                |          |         |                    |                                     |                         |
| 072   | L    | tables           | yes          |                |          |         |                    |                                     |                         |
|   | R    | tables           | yes          |                |          |         |                    |                                     |                         |
| 073   | L    | tables           | yes          |                |          |         |                    |                                     |                         |
|   | R    | tables           | yes          |                |          |         |                    |                                     |                         |
| 074   | L    | tables           | yes          |                |          |         |                    |                                     |                         |
|   | R    | tables           | yes          |                |          |         |                    |                                     |                         |
| 075   | L    | tables           | yes          |                |          |         |                    |                                     |                         |
|   | R    | tables           | yes          |                |          |         |                    |                                     |                         |
| 076   | L    | tables           | yes          |                |          |         |                    |                                     |                         |
|   | R    | tables           | yes          |                |          |         |                    |                                     |                         |
| 077   | L    | tables           | yes          |                |          |         |                    |                                     |                         |
|   | R    | tables           | yes          |                |          |         |                    |                                     |                         |
| 078   | L    | tables           | yes          |                |          |         |                    |                                     |                         |
|   | R    | tables           | yes          |                |          |         |                    |                                     |                         |
| 079   | L    | table            | yes          |                |          |         |                    |                                     |                         |
|   | R    | table            | yes          |                |          |         |                    |                                     |                         |
| 080   | L    | table            | yes          |                |          |         |                    |                                     |                         |
|   | R    | table            | yes          |                |          |         |                    |                                     |                         |
| 081   | L    | table            | yes          |                |          |         | page '35' missing  | final part of the list of earls     |                         |
|   | R    | table            | yes          |                |          |         | page '36' missing  | first part of the list of marquises |                         |
| 082   | L    | table            | yes          |                |          |         |                    |                                     |                         |
|   | R    | table            | yes          |                |          |         |                    |                                     |                         |
| 083   | L    | table            | yes          |                |          |         |                    |                                     |                         |
|   | R    | table            | yes          |                |          |         |                    |                                     |                         |
| 084   | L    | table            | yes          |                |          |         |                    |                                     |                         |
|   | R    | table            | yes          |                |          |         |                    |                                     |                         |
| 085   | L    | table            | yes          |                |          |         |                    |                                     |                         |
|   | R    | table            | yes          |                |          |         |                    |                                     |                         |
| 086   | L    | table            | yes          |                |          |         |                    |                                     |                         |
|   | R    | table            | yes          |                |          |         |                    |                                     |                         |
| 087   | L    | table            | yes          |                |          |         |                    |                                     |                         |
|   | R    | table            | yes          |                |          |         |                    |                                     |                         |
| 088   | L    | table            | yes          |                |          |         |                    |                                     |                         |
|   | R    | table            | yes          |                |          |         |                    |                                     |                         |
| 089   | L    | table            | yes          |                |          |         |                    |                                     |                         |
|   | R    | table            | yes          |                |          |         |                    |                                     |                         |

| Henry Man's 1786 pocket-book: analysis by page  |      |                  |              |                |          |         |                    |                        |                         |
|---|------|------------------|--------------|----------------|----------|---------|--------------------|------------------------|-------------------------|
| <i>The Daily Journal; or, the Gentleman's, Merchant's and Tradesman's Complete Annual Accompt-Book for the Pocket or Desk</i> |      |                  |              |                |          |         |                    |                        |                         |
| Page-pair   | Side | Page description | Pre-printed? | Erased pencil? | Unerased |         | Legibility factors | Content comments       | Hand-written parts ref. |
|   |      |                  |              |                | ink?     | pencil? |                    |                        |                         |
| 090   | L    | table            | yes          |                |          |         |                    |                        |                         |
|   | R    | table            | yes          |                |          |         |                    |                        |                         |
| 091   | L    | table            | yes          |                |          |         |                    |                        |                         |
|   | R    | table            | yes          |                |          |         |                    |                        |                         |
| 092   | L    | table            | yes          |                |          |         |                    |                        |                         |
|   | R    | table            | yes          |                |          |         |                    |                        |                         |
| 093   | L    | table            | yes          |                |          |         |                    |                        |                         |
|   | R    | tail note        |              | yes            | yes      |         |                    |                        | 093R                    |
| 094   | L    | tail note        |              | yes            | yes      |         |                    |                        | 094L                    |
|   | R    | tail note        |              |                | yes      | yes     |                    |                        | 094R                    |
| 095   | L    | tail note        |              | yes            | yes      |         |                    | upper third struck out | 095L                    |
|   | R    | tail note        |              | yes            | yes      |         |                    | upper third struck out | 095R                    |
| 096   | L    | tail note        |              |                |          |         |                    |                        | 096L                    |
|   | R    | tail note        |              |                |          |         | see through        |                        | 096R                    |
| 097   | L    | tail note        |              |                |          |         |                    |                        | 097L                    |
|   | R    | tail note        |              |                |          |         | see through        |                        | 097R                    |
| 098   | L    | tail note        |              |                |          |         | some see-through   |                        | 098L                    |
|   | R    | tail note        |              |                |          |         |                    |                        | 098R                    |
| 099   | L    | tail note        |              |                |          |         |                    |                        | 099L                    |
|   | R    | tail note        |              |                |          |         |                    |                        | 099R                    |
| 100   | L    | tail note        |              |                |          |         |                    |                        | 100L                    |
|   | R    | tail note        |              |                |          |         |                    |                        | 100R                    |
| 101   | L    | tail note        |              |                |          |         |                    |                        | 101L                    |
|   | R    | tail note        |              |                |          |         |                    |                        | 101R                    |



P OF ENVELOPE

Henry Man

1786.

"REPTON" ECON  
Geerings, 80, High Street

1786.

Henry Man married  
May 17<sup>th</sup> 1775, to  
Eleanor Thompson of  
East-Ham Essex. (she died  
on the 16<sup>th</sup> of March 1823)  
at Maidstone)



Wm. A. D. 1892

1892

1892

1892

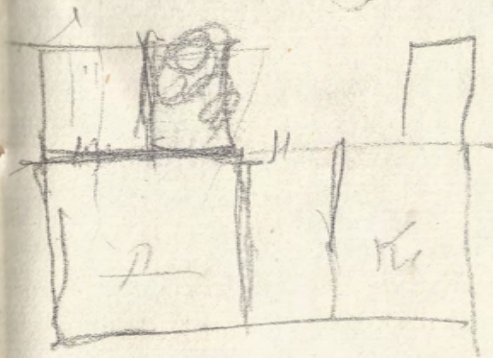
1892

1892

1892

1892

Beaufort





2100 -  
 701. 5 -  
 350. 12. 6  
 350 -  
 700 : 15 : -  
 700 : 15 : -  


---

 4909 : 7 : 6  
 6. 6 -

695 -  
 697. 10 -  
 701. 5 -  
 703. 15 -  
 710 -  
 715 -  
 715 : 6  
 6. 6

4943. 16  
 9. 7. 6  


---

 34 : 8 : 6

May Account

3000 70 1000 69  $\frac{1}{2}$

1000 70  $\frac{1}{8}$  1000 69  $\frac{3}{4}$

300 70  $\frac{1}{8}$  1000 70  $\frac{1}{8}$

500 70  $\frac{1}{8}$  1000 70  $\frac{3}{8}$

2000 - 70  $\frac{3}{8}$  1000 71 -

2000 71  $\frac{1}{2}$

6. 15 -  
 3 15  


---

 10 : 10





|        |    |          |    |        |    |          |   |           |   |         |   |        |   |
|--------|----|----------|----|--------|----|----------|---|-----------|---|---------|---|--------|---|
| Sunday | 12 | Saturday | 11 | Friday | 10 | Thursday | 9 | Wednesday | 8 | Tuesday | 7 | Monday | 6 |
|--------|----|----------|----|--------|----|----------|---|-----------|---|---------|---|--------|---|

|        |    |          |    |        |    |          |   |           |   |         |   |        |   |
|--------|----|----------|----|--------|----|----------|---|-----------|---|---------|---|--------|---|
| Sunday | 12 | Saturday | 11 | Friday | 10 | Thursday | 9 | Wednesday | 8 | Tuesday | 7 | Monday | 6 |
|--------|----|----------|----|--------|----|----------|---|-----------|---|---------|---|--------|---|

| Account of Monies | Receiv'd | Paid or Lent |
|-------------------|----------|--------------|
|-------------------|----------|--------------|

| Account of Monies |  | Receiv'd |    |    | Paid or Lent |    |    |
|-------------------|--|----------|----|----|--------------|----|----|
|                   |  | l.       | s. | d. | l.           | s. | d. |
| 6                 |  |          |    |    |              |    |    |

|        |    |          |    |        |    |          |    |           |    |         |    |        |    |
|--------|----|----------|----|--------|----|----------|----|-----------|----|---------|----|--------|----|
| Sunday | 10 | Saturday | 18 | Friday | 17 | Thursday | 16 | Wednesday | 15 | Tuesday | 14 | Monday | 13 |
|--------|----|----------|----|--------|----|----------|----|-----------|----|---------|----|--------|----|

B. 4000 April  
@ 72/8

Sold 4000 April  
72  $\frac{1}{2}$

Account of Monies

Week 7

| Receiv'd | Paid or Lent |
|----------|--------------|
| 1870     |              |
| 1871     |              |
| 1872     |              |
| 1873     |              |
| 1874     |              |
| 1875     |              |
| 1876     |              |
| 1877     |              |
| 1878     |              |
| 1879     |              |
| 1880     |              |
| 1881     |              |
| 1882     |              |
| 1883     |              |
| 1884     |              |
| 1885     |              |
| 1886     |              |
| 1887     |              |
| 1888     |              |
| 1889     |              |
| 1890     |              |
| 1891     |              |
| 1892     |              |
| 1893     |              |
| 1894     |              |
| 1895     |              |
| 1896     |              |
| 1897     |              |
| 1898     |              |
| 1899     |              |
| 1900     |              |
| 1901     |              |
| 1902     |              |
| 1903     |              |
| 1904     |              |
| 1905     |              |
| 1906     |              |
| 1907     |              |
| 1908     |              |
| 1909     |              |
| 1910     |              |
| 1911     |              |
| 1912     |              |
| 1913     |              |
| 1914     |              |
| 1915     |              |
| 1916     |              |
| 1917     |              |
| 1918     |              |
| 1919     |              |
| 1920     |              |
| 1921     |              |
| 1922     |              |
| 1923     |              |
| 1924     |              |
| 1925     |              |
| 1926     |              |
| 1927     |              |
| 1928     |              |
| 1929     |              |
| 1930     |              |
| 1931     |              |
| 1932     |              |
| 1933     |              |
| 1934     |              |
| 1935     |              |
| 1936     |              |
| 1937     |              |
| 1938     |              |
| 1939     |              |
| 1940     |              |
| 1941     |              |
| 1942     |              |
| 1943     |              |
| 1944     |              |
| 1945     |              |
| 1946     |              |
| 1947     |              |
| 1948     |              |
| 1949     |              |
| 1950     |              |
| 1951     |              |
| 1952     |              |
| 1953     |              |
| 1954     |              |
| 1955     |              |
| 1956     |              |
| 1957     |              |
| 1958     |              |
| 1959     |              |
| 1960     |              |
| 1961     |              |
| 1962     |              |
| 1963     |              |
| 1964     |              |
| 1965     |              |
| 1966     |              |
| 1967     |              |
| 1968     |              |
| 1969     |              |
| 1970     |              |
| 1971     |              |
| 1972     |              |
| 1973     |              |
| 1974     |              |
| 1975     |              |
| 1976     |              |
| 1977     |              |
| 1978     |              |
| 1979     |              |
| 1980     |              |
| 1981     |              |
| 1982     |              |
| 1983     |              |
| 1984     |              |
| 1985     |              |
| 1986     |              |
| 1987     |              |
| 1988     |              |
| 1989     |              |
| 1990     |              |
| 1991     |              |
| 1992     |              |
| 1993     |              |
| 1994     |              |
| 1995     |              |
| 1996     |              |
| 1997     |              |
| 1998     |              |
| 1999     |              |
| 2000     |              |
| 2001     |              |
| 2002     |              |
| 2003     |              |
| 2004     |              |
| 2005     |              |
| 2006     |              |
| 2007     |              |
| 2008     |              |
| 2009     |              |
| 2010     |              |
| 2011     |              |
| 2012     |              |
| 2013     |              |
| 2014     |              |
| 2015     |              |
| 2016     |              |
| 2017     |              |
| 2018     |              |
| 2019     |              |
| 2020     |              |
| 2021     |              |
| 2022     |              |
| 2023     |              |
| 2024     |              |
| 2025     |              |
| 2026     |              |
| 2027     |              |
| 2028     |              |
| 2029     |              |
| 2030     |              |
| 2031     |              |
| 2032     |              |
| 2033     |              |
| 2034     |              |
| 2035     |              |
| 2036     |              |
| 2037     |              |
| 2038     |              |
| 2039     |              |
| 2040     |              |
| 2041     |              |
| 2042     |              |
| 2043     |              |
| 2044     |              |
| 2045     |              |
| 2046     |              |
| 2047     |              |
| 2048     |              |
| 2049     |              |
| 2050     |              |
| 2051     |              |
| 2052     |              |
| 2053     |              |
|          |              |

|           |           |           |           |           |           |
|-----------|-----------|-----------|-----------|-----------|-----------|
| <i>l.</i> | <i>s.</i> | <i>d.</i> | <i>l.</i> | <i>s.</i> | <i>d.</i> |
|-----------|-----------|-----------|-----------|-----------|-----------|



MEMORANDUMS, OBSERVATIONS, and  
*Appointments*, in FEBRUARY, 1786.

20  
Monday  
21  
Tuesday  
22  
Wednesday  
23  
Thursday  
24  
Friday  
25  
Saturday  
26  
Sunday

FEBRUARY, 2d Month, has xxviii Days.

[Week 8]

Account of Monies

Receiv'd

Paid or Lent

20

l.

s.

d.

l.

s.

d.

MEMORANDUMS, OBSERVATIONS, and  
*Appointments*, in FEBRUARY, 1786.

27 Monday  
 28 Tuesday  
 1 MARCH  
 2 Wednesday  
 3 Thursday  
 4 Friday  
 5 Saturday  
 6 Sunday

*paid Fuld 16/- for  
 Wakk Rate*

FEBRUARY, 2d Month, has xxviii Days. [Week 9]

Account of Monies

Receiv'd Paid or Lent

27

l. s. d. l. s. d.

1 MARCH





MEMORANDUMS, OBSERVATIONS, and  
*Appointments*, in MARCH, 1786.

20 Monday  
 21 Tuesday  
 22 Wednesday  
 23 Thursday  
 24 Friday  
 25 Saturday  
 26 Sunday

*Sold 2000 - @ 8 <sup>5</sup>/<sub>8</sub> -*  
*1500 m<sup>o</sup> the*  
*500: Self*

MARCH, 3d Month, has xxxi Days.

[Week 12]

Account of Monies

Receiv'd

Paid or Lent

20

l. s. d. l. s. d.





MEMORANDUMS, OBSERVATIONS, and  
*Appointments*, in JUNE, 1786.

Sunday 11 Saturday 10 Friday 9 Thursday 8 Wednesday 7 Tuesday 6 Monday 5

JUNE, 6th Month, has xxx Days.

[Week 23]

Account of Monies

Receiv'd

Paid or Lent

5

l.

s.

d.

l.

s.

d.



MEMORANDUMS, OBSERVATIONS, and  
*Appointments*, in JUNE, 1786.

*Appointments, in JUNE, 1786.*

|        |    |           |
|--------|----|-----------|
| Sunday | 12 | Monday    |
| Sunday | 13 | Tuesday   |
| Sunday | 14 | Wednesday |
| Sunday | 15 | Thursday  |
| Sunday | 16 | Friday    |
| Sunday | 17 | Saturday  |
| Sunday | 18 | Sunday    |

12

Monday

13

Tuesday

14

Wednesday

15

Thursday

16

Friday

17

Saturday

181

Sunday

JUNE, 6th Month, has xxx Days.

[Week 24]

Account of Monies

Receiv'd

| Paid or Lent |      |
|--------------|------|
| 1890         | 1891 |
| 1892         | 1893 |
| 1894         | 1895 |
| 1896         | 1897 |
| 1898         | 1899 |
| 1900         | 1901 |
| 1902         | 1903 |
| 1904         | 1905 |
| 1906         | 1907 |
| 1908         | 1909 |
| 1910         | 1911 |
| 1912         | 1913 |
| 1914         | 1915 |
| 1916         | 1917 |
| 1918         | 1919 |
| 1920         | 1921 |
| 1922         | 1923 |
| 1924         | 1925 |
| 1926         | 1927 |
| 1928         | 1929 |
| 1930         | 1931 |
| 1932         | 1933 |
| 1934         | 1935 |
| 1936         | 1937 |
| 1938         | 1939 |
| 1940         | 1941 |
| 1942         | 1943 |
| 1944         | 1945 |
| 1946         | 1947 |
| 1948         | 1949 |
| 1950         | 1951 |
| 1952         | 1953 |
| 1954         | 1955 |
| 1956         | 1957 |
| 1958         | 1959 |
| 1960         | 1961 |
| 1962         | 1963 |
| 1964         | 1965 |
| 1966         | 1967 |
| 1968         | 1969 |
| 1970         | 1971 |
| 1972         | 1973 |
| 1974         | 1975 |
| 1976         | 1977 |
| 1978         | 1979 |
| 1980         | 1981 |
| 1982         | 1983 |
| 1984         | 1985 |
| 1986         | 1987 |
| 1988         | 1989 |
| 1990         | 1991 |
| 1992         | 1993 |
| 1994         | 1995 |
| 1996         | 1997 |
| 1998         | 1999 |
| 2000         | 2001 |
| 2002         | 2003 |
| 2004         | 2005 |
| 2006         | 2007 |
| 2008         | 2009 |
| 2010         | 2011 |
| 2012         | 2013 |
| 2014         | 2015 |
| 2016         | 2017 |
| 2018         | 2019 |
| 2020         | 2021 |
| 2022         | 2023 |
| 2024         | 2025 |
| 2026         | 2027 |
| 2028         | 2029 |
| 2030         | 2031 |
| 2032         | 2033 |
| 2034         | 2035 |
| 2036         | 2037 |
| 2038         | 2039 |
| 2040         | 2041 |
| 2042         | 2043 |
| 2044         | 2045 |
| 2046         | 2047 |
| 2048         | 2049 |
| 2050         | 2051 |
| 2052         | 2053 |
| 2054         | 2055 |
| 2056         | 2057 |
| 2058         | 2059 |
| 2060         | 2061 |
| 2062         | 2063 |
| 2064         | 2065 |
| 2066         | 2067 |
| 2068         | 2069 |
| 2070         | 2071 |
| 2072         | 2073 |
| 2074         | 2075 |
| 2076         | 2077 |
| 2078         | 2079 |
| 2080         | 2081 |
| 2082         | 2083 |
| 2084         | 2085 |
| 2086         | 2087 |
| 2088         | 2089 |
| 2090         | 2091 |
| 2092         | 2093 |
| 2094         | 2095 |
| 2096         | 2097 |
| 2098         | 2099 |
| 2100         | 2101 |
| 2102         | 2103 |
| 2104         | 2105 |
| 2106         | 2107 |
| 2108         | 2109 |
| 2110         | 2111 |
| 2112         | 2113 |
| 2114         | 2115 |
| 2116         | 2117 |
| 2118         | 2119 |
| 2120         | 2121 |
| 2122         | 2123 |
| 2124         | 2125 |
| 2126         | 2127 |
| 2128         | 2129 |
| 2130         | 2131 |
| 2132         | 2133 |
| 2134         | 2135 |
| 2136         | 2137 |
| 2138         | 2139 |
| 2140         | 2141 |
| 2142         | 2143 |
| 2144         | 2145 |
| 2146         | 2147 |
| 2148         | 2149 |
| 2150         | 2151 |
| 2152         | 2153 |
| 2154         | 2155 |
| 2156         | 2157 |
| 2158         | 2159 |
| 2160         | 2161 |
| 2162         | 2163 |
| 2164         | 2165 |
| 2166         | 2167 |
| 2168         | 2169 |
| 2170         | 2171 |
| 2172         | 2173 |
| 2174         | 2175 |
| 2176         | 2177 |
| 2178         | 2179 |
| 2180         | 2181 |
| 2182         | 2183 |
| 2184         | 2185 |
| 2186         | 2187 |
| 2188         | 2189 |
| 2190         |      |

12

4.

f.

d.

4.

9.1

1

MEMORANDUMS, OBSERVATIONS, and  
*Appointments*, in JULY, 1786.

3 Monday  
 4 Tuesday  
 5 Wednesday  
 6 Thursday  
 7 Friday  
 8 Saturday  
 9 Sunday

JULY, 7th Month, has xxxi Days.

[Week 27]

Account of Monies

Receiv'd

Paid or Lent

3

l. s. d. l. s. d.



MEMORANDUMS, OBSERVATIONS, and  
*Appointments*, in JULY, 1786.

3 Monday  
 4 Tuesday  
 5 Wednesday  
 6 Thursday  
 7 Friday  
 8 Saturday  
 9 Sunday

JULY, 7th Month, has xxxi Days.

[Week 27]

Account of Monies

Receiv'd

Paid or Lent

3

l. s. d. l. s. d.

MEMORANDUMS, OBSERVATIONS, and  
*Appointments*, in JULY, 1786.

10 | Monday  
 11 | Tuesday  
 12 | Wednesday  
 13 | Thursday  
 14 | Friday  
 15 | Saturday  
 16 | Sunday

JULY, 7th Month, has xxxi Days.

[Week 28]

Account of Monies

Receiv'd

Paid or Lent

10

l. s. d. l. s. d.



MEMORANDUMS, OBSERVATIONS, and  
*Appointments*, in JULY, 1786.

17  
Monday  
18  
Tuesday  
19  
Wednesday  
20  
Thursday  
21  
Friday  
22  
Saturday  
23  
Sunday

JULY, 7th Month, has xxxi Days.

[Week 29]

Account of Monies

Receiv'd

Paid or Lent

17

l. s. d.

l. s. d.

MEMORANDUMS, OBSERVATIONS, and  
*Appointments*, in JULY, 1786.

24 | Monday  
 25 | Tuesday  
 26 | Wednesday  
 27 | Thursday  
 28 | Friday  
 29 | Saturday  
 30 | Sunday

JULY, 7th Month, has xxxi Days.

[Week 30]

Account of Monies

Receiv'd

Paid or Lent

24

l.

s.

d.

l.

s.

d.



|        |   |          |   |        |   |          |   |           |   |         |   |        |   |
|--------|---|----------|---|--------|---|----------|---|-----------|---|---------|---|--------|---|
| Sunday | 8 | Saturday | 7 | Friday | 6 | Thursday | 5 | Wednesday | 4 | Tuesday | 3 | Monday | 2 |
|--------|---|----------|---|--------|---|----------|---|-----------|---|---------|---|--------|---|

[illegible]

Jany Acc. B.

2000 Bag 76/8

1000 T. H. C. 72/8

1000 d. H. C. 68 7/8

1000 d. H. C. 68 7/8

1000 d. H. C. 68 7/8

1000 d. H. C. 68 7/8

1000 d. H. C. 68 7/8

1000 d. H. C. 68 7/8

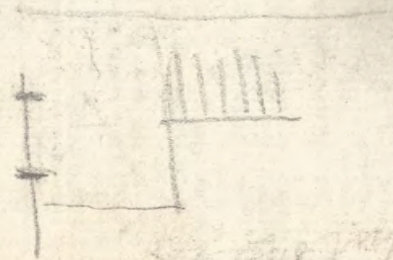
1000 d. H. C. 68 7/8

1000 d. H. C. 68 7/8

1000 d. H. C. 68 7/8

1000 d. H. C. 68 7/8

1000 d. H. C. 68 7/8



Sold 2000 Bag 76 3/4

1000 d. H. C. 76 1/2

1000 d. H. C. 76 1/2

1000 d. H. C. 76 1/2

1000 d. H. C. 76 1/2

1000 d. H. C. 76 1/2

1000 d. H. C. 76 1/2

1000 d. H. C. 76 1/2

1000 d. H. C. 76 1/2

1000 d. H. C. 76 1/2

1000 d. H. C. 76 1/2

1000 d. H. C. 76 1/2

1000 d. H. C. 76 1/2



April -

~~Sold 4000 - 72 1/8~~

~~Sold 3000 R.M. 72 1/8~~

~~2000 Cope 72 1/8~~

B<sup>2</sup> apr 21

4000 @ 70 5/8 2825

~~2000 R.M. 70 5/8~~

2000 Cope 70 5/8 1412.10

~~2000 R.M. 70 5/8~~

1000 do 70 1/4 702.10

2000 do 69 - 1380 -  
6320 -

21:13:3  
2:10: -  
Bagwell 2:10: -  
24:3:3

~~Sold 4000 - 72 1/2~~

~~1000 - 72 5/8~~

~~S1000 - 72 3/4~~

~~1000 72 1/8~~

Sold 4000 - 71 -

2840

711.5 - 1000 - 71 1/8 Garrett

707.10 - 1000 - 70 3/4 Fry

708.15 - 1000 - 70 7/8 do.

710 - 1000 - 71 - Pilliner

700 - 1000 - 70 - T Cope

6377:10

6320

710

54:10

82:3:3

2:10: -

84:13:3

59:10

25:3:3

57:10:

1:8:3 Comen

15:15:0 Tea

74:13 3

7:10 -

82:3:3

59:10: -

27:10 3

Comm Copy amount  
 Capt Bullin . 2100 —  
 Heylyn — 70 —  
 Edington oas. 100 —  
 P<sup>r</sup> Barbant 2/ —

2270 —  
 1. 2. 5. 6. —  
 9 —  
 1. 1. 3

706 : 5 — 695 —  
 707 : 10 — 693 : 15 —  
 1413 - 15 : 1988 : 15 —  
 1988 - 15 —  
 25 : L.W. — 9 1/4  
 17 : 10 : She — 5/8  
 13 : 2. 6 D — 5/8 6.5  
 6 : 17 : 6 Janat. 70 1/4 —  
 7. 10 — 9 1/4 —  
 59 : 10 — 1. 2/8  
 13. 15 —  
 6. 17. 6 —

Pull B. 1000 — 70 5/8  
 do 1000 — 70 1/4

Sold 1000 @ 69 1/2  
 1000 @ 69 1/4

Navy Bill  
 instead of her

9 9/8  
 8 5/8

3. 15 —  
 3. 15 —

17. 10 —  
 3. 15 —  
 21. 6



Com<sup>h</sup> for Mary. — 5  
 Williams too — 1. 3  
 do Eschiquet Bell. — 6.  
 638

32 — 2. 12. 6.  
 5

3475 —  
 Newnham 12: 2: 6



Turnpike — 3 806

Rainford 2 7 480

Turnpike — 6 50

Boots — 1 — 24003  
 960

Ingatula 1: 2 — 2496.0  
 5

17 —

4 —

14 —

33 6 —

— 10 — 6. Water

2 3 — 6 Harwich

2 6

1 6 Boots

4 6 Ward

1: 2

6: 9: 2

The States General of  
 the great Britain &  
 Army & Navy  
 &c

These are to be used  
 for 100,000 £ to make  
 up the million

2 of W 500  
 2 of 100  
 3 of 200  
 3 of 100  
 10 of 500  
 3 of 100  
 50  
 35  
 30  
 10730 10

21. Blank  
 33000

Total Drawn 10000  
 Last 10000

546  
 300  
 1



From 17 to 20 China  
 then this

3.0 1/2 Single 65.  
 1 7. — 70 with duty

Payments  
 5 pp 6<sup>th</sup> 6 April  
 10 — 26 May  
 25 — 22 June  
 25 — 10 July  
 35 — 1 Aug

10.10.6  
 6.6  
 2.7.11  
 1.12. —  
 — 14. —

1785.  
 11000 S  
 6250 H 3-  
 4650 S 11-  
 18300 B  
 43661 - Cong

The Ladies to Ship in  
 55

Hadleigh — 6. 3. 7

Horsler — " — 8

Bury — 16. 9  
 1. 26  
 36. 8 1. 7. 11

Hadleigh — 1. 7. 11  
 1. 7. 11

Cambridge — 1. 3. 0  
 6. 1. 12. —  
 — 10. 18. 6

Mr. Angell

June 1st

65,000

25,000

45,000

No. Hysen

800

700

1800

July 150.00

100

100

100

100

100



Number 493 — 71 = 11 India Script  
 50 — 1 — 1  
 70 — 1 — 1 diff 6 d's in Spent

852.10 : — # 8<sup>to</sup>  
 190 — — 11<sup>to</sup>  
 7595 : 10 + 11 77<sup>to</sup>  
 30 — — 7700000000  
 1625 — — 77550  
 852/50  
 2000 —  
 77  
 14000  
 14000  
 1540/00  
 1470  
 70

S  
 S

000 label      ink on torn-off corner of printed stationery

Henry Man  
1786

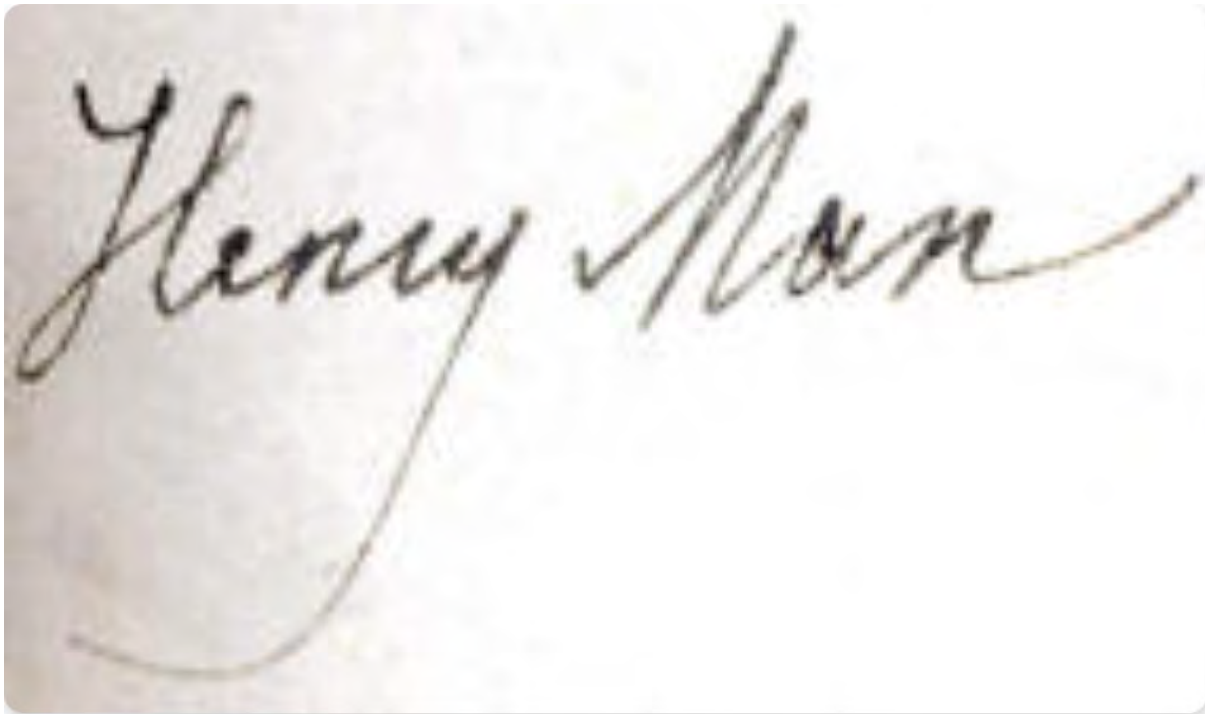
by **Writer A**

The label is about 3cm tall and 6.5cm wide, torn from the bottom left corner of an economy label of the "Repton" brand, printed by Geerings of Ashford, Kent, who still (Feb., 2018) operate from the same address (30, High St.) since their founding in 1903, but who stopped supplying stationery in the late 20th. century. The handwriting appears to be the same as that in the pencil additions to 001R, possibly to 036L, and perhaps elsewhere too. I call the 20th. century person who wrote the label "Writer A", the most recent to add text to the pocket-book.

001R      ink with later pencil expansions

|                                     |              |                    |
|-------------------------------------|--------------|--------------------|
|                                     | <u>1786.</u> | by <b>Writer A</b> |
| <u>Henry Man married</u>            |              | by <b>Writer B</b> |
| <u>May 17<sup>th</sup> 1775, to</u> |              |                    |
| <u>Eleanor Thompson of</u>          |              |                    |
| <u>East Ham Essex. (she died</u>    |              |                    |
| <u>on the 16th of March 1823</u>    |              |                    |
| at Maidstone) )                     |              | by <b>Writer A</b> |

The "1823" shows that this entry postdates HM's death in 1799 and may be provisionally considered as 19th. century. I call the person who wrote it "Writer B". It is possible that 036L also shows an addition by Writer A or Writer B.



Imaged above is Henry Man's signature (taken from a different document), giving us the 18th. century "Writer C". The handwriting in the rest of the book looks generally similar, and is only commented upon where a different writer may have played a part. Visual comparison may be made between this signature and the page images from 002 to 101. It is possible that a further hand, "Writer D", may have written some of the text, especially those where erasure is visible and often overwritten. Whether this is so has not been systematically researched.



002L ink calculations over mostly erased pencil (hereafter = "EP")

$$\begin{array}{r} 17.10 \quad - \quad = 165 \\ 4.4.1 \\ \hline 13: 5.11 \\ 15 \\ \hline 14:--:11 \\ 7.10.-- \\ \hline 3:15:-- \\ \hline 25: 5.11 \end{array}$$

July **caret addition intended for 002R**

The EP text holds similar interim calculations, mostly illegible, other than this, written with the page the other way up:

$$\begin{array}{r} 8.5.0 \\ 3 \\ \hline 11.5.0 \end{array}$$

002R to 003R ink with unconfirmed EP

|   |            |   |
|---|------------|---|
| Bro <sup>t</sup> forw <sup>d</sup>  | 507:10.11  | <b>source external and unknown</b>          |
| D <sup>o</sup>  | 525 -- --  | <b>source external and unknown</b>          |
| Jany Settling   | 1032:10:11 |   |
| B An <sup>s</sup>   | 118:10:11  |   |
| Tickets   | 8: 7: 6    |   |
| on 1000 @ 1/8   | 1: 5:--    |   |
| 1000 @ 1/8  | 1. 5 --    |   |
| Feby Settling   | 35 -----   |   |
| April d <sup>o</sup>  | 25: 3: 3   |   |
| Tickets Lotty   | 10:12. 6   |   |
| May Settling  | 81.10 --   |   |
| Won on the price 75   | 10:10:--   |   |
| D <sup>o</sup> . <sup>o</sup> / <sub>the</sub> Tickets  | 3.15 --    |   |
| <sup>3</sup> / <sub>4</sub> p <sup>r</sup> Cent on 1500.0550:                                       | 11:11:--   | <b>unclear item name, hereafter = "UIN"</b> |
| Sold 50 Tickets profit  | 10:--:--   |   |
| July -- 2500  | ---        | <b>caret insertion</b>                      |
| India. Ann <sup>s</sup> 1 p <sup>r</sup> C <sup>t</sup>   | 25:--:--   | <b>UIN</b>                                  |
| d <sup>o</sup> 2 <sup>1</sup> / <sub>2</sub> 2500 . ----  | .62:10:--  |   |
| d <sup>o</sup> <sup>1</sup> / <sub>2</sub> p <sup>r</sup> C <sup>t</sup> on 2000 . T.As.            | 10:-----   | <b>UIN</b>                                  |
| d <sup>o</sup> 1 <sup>1</sup> / <sub>4</sub> p <sup>r</sup> C <sup>t</sup> on 1000 . D <sup>o</sup> | 12:10 --   |   |
| D 3 <sup>5</sup> / <sub>8</sub> p <sup>r</sup> C <sup>t</sup> on 1000 . s.as.                       | 36:05: 0   | <b>UIN</b>                                  |
|   | 1511. 5: 2 |   |

**over to 003L**

|   |            |   |
|---|------------|---|
| Bro <sup>t</sup> Over   | 1511. 5: 2 | <b>from 002R</b>  |
| 1000 In Joseph @ 4/4 _____  | .42:10:--  | <b>UIN; of EP only "400" visible</b>  |
| 1000 O:A @ 4/2  | .45:--:--  |   |
| 850. N A . 2/8 Prof <sup>t</sup>  | 18: 1: 3   |   |
| 1000 O:A . Bag 3/8 prof <sup>t</sup>  | 31: 5 --   | <b>UIN</b>  |
| 1000 InScript 1 prof <sup>t</sup> :   | 10 -----   | <b>UIN</b>  |
| 1000.N S I A by 1. <sup>1</sup> / <sub>2</sub> 1 <sup>5</sup> / <sub>8</sub> .--- | 16:12: 6   | <b>UIN and '1<sup>1</sup>/<sub>2</sub> small above '1<sup>5</sup>/<sub>8</sub>'</b> |

5000 Bank Stock  
 2000 @  $3\frac{3}{4}$ . 75 - }  
 3000 @  $3\frac{1}{2}$ . 105 } 180.---:--

---  
 Aug<sup>t</sup> / -----  
 Sold 2000. Bank  $3\frac{1}{4}$ . 65:---:--  
 By 9000 Cons<sup>ls</sup> @  $\frac{5}{8}$  56: 5:--  
 Sept<sup>r</sup>  
 By 1000 Bank @  $\frac{3}{2}$  35:---:--  
 By 1000 Cons<sup>ls</sup> @  $\frac{7}{8}$  8:15:--  
 By 1000 Bank @  $\frac{3}{4}$  32:10:--  
 By 1000 d<sup>o</sup> 3 30:---:--  
 2082: 3:11

across to 003R

M Bro<sup>t</sup> forw<sup>d</sup> 2082: 3:11 from 003L - UIN

50 Tickets @  $\frac{J}{3/6}$  Pro. 8:15:-- UIN  
 October  
 2000 Bank<sub>s</sub>.  $3\frac{1}{4}$ . 65.-- --  
 lost by India . 30 ---  
 2000. Con<sup>s</sup>: @  $1\frac{1}{2}$  - 30:---:--  
 1000 Bank @  $5\frac{1}{4}$  52:10:--  
 lost by Bank 30-  
 2238: 8:11

The page is covered with EP, which is readable only in part on the lower half, where the only ink is this isolated jotting:

105 } unclear how this left-margin sum  
 180 } relates to anything else on 003.  
 65 }  
 350 }

Partly readable EP is:

45 1059  
 g<sup>B</sup>11 5 1 206 --- UIN  
 5 12 6  
 95 -- 6  
 1  
 965

004L Partly readable EP with more words than figures

Who xxxxxxxxxxxxxxxxxxxxxxxxxxxxxxxxxxxx  
 Will xxxxxxxxxxxxxxxxxxxxxxxxxxxxxxxxxxxx  
 xxxxxxxxxxxxxxxxxxxxxxxxxxxxxxxxxxxx  
 xxxxxxxxxxxxxxxxxxxxxxxxxxxxxxxxxxxx  
 xxxxxxxxxxxxxxxxxxxxxxxxxxxxxxxxxxxxas also  
 has sold by y? --

004L Rough pencil sketch

Beaufoy

may refer to the vinegar factory in Cuper's Gardens,  
 Lambeth, set up by Mark Beaufoy (1718–1782)



006L EP with words and figures, ink accounts

**EP five lines upper half of page**

*sold for xxxxxxx @ -----*  
*5000 @ xxxxxx -----*  
*Capxxxxxx*  
*xxxxxxxxxxxxxxxxxxxx*  
*xxxxxxxxxxxx*

**ink lower half of page**

|                   |                |
|-------------------|----------------|
| 2100 -            | 695 -- :-      |
| 701. 5 -          | 697.10 --      |
| 350 12 6          | 701. 5 -       |
| 350 -----         | 703.15 -       |
| 700:15: -         | 710 --         |
| 703.15 --         | 715 -          |
| <u>4909: 7: 6</u> | 715 -          |
| 6 6               | <u>6. 6</u>    |
|                   | 4943.16        |
|                   | <u>9. 7. 6</u> |
|                   | 34: 8.-6       |
|                   | <hr/>          |
|                   | 12 10          |
|                   | 45 15 6        |

} EP & more at far left is perhaps  
draft of left-hand figures

006R EP with words and figures, ink accounts

May Accounts  
 Bot of Pilr  
 Bot of *Isas*

3000 70 1000 69<sup>1</sup>/<sub>2</sub>  
 1000 70<sup>1</sup>/<sub>8</sub> 1000 69<sup>3</sup>/<sub>4</sub>  
 500 70<sup>1</sup>/<sub>8</sub> 1000 70<sup>1</sup>/<sub>8</sub>  
 500 70<sup>1</sup>/<sub>8</sub> 61000:70<sup>3</sup>/<sub>8</sub>  
 2000 - 70<sup>3</sup>/<sub>8</sub> 1000 71 -  
 2000 71<sup>1</sup>/<sub>2</sub>

6.15 --  
3 18  
 10:10

**EP - plural uncertain**  
**EP - rest of line overwritten in ink**  
**EP - rest of line overwritten in ink**

**EP - elevation view of building on right with gate and block wall to its left - perhaps Beaufoy's vinegar works?**

007L EP with words and figures

011R pencil notes

House Dealer at  
 Reading has a backer  
 Mxx was in *Grantham*  
*JL* friday & Saturday  
 Grey Coat. --

012L pencil note - **partly EP?**

Dulbyxxxxxxxxxxxxxxxxdin

013L pencil accounts against three days - **partly EP?**

Jan 10 Sold xxxxxx  
1000 xxxx for Jan<sup>y</sup> -  
Jan 11 Sold xxxxxxxxxxx  
1000 xxxxxxxxxxx  
Jan 12 Sold xxxxxxxxxxx  
1000 Cxxxxxxxx 73

014L pencil accounts against three days

Jan 16 Sold M<sup>r</sup> Fletcher  
1000 for Feb<sup>y</sup> @ 72 <sup>5</sup>/<sub>8</sub>  
Jan 17 Sold 1000 7<sup>1</sup>/<sub>2</sub> 1<sup>1</sup>/<sub>2</sub> <sup>8</sup>  
to John Steed  
Jan 21 Bo<sup>t</sup> 1000 of J Stead  
@ 68<sup>1</sup>/<sub>8</sub> N S S A

014R continuation of 014L against one day

Jan 17 1000 to Philip Pott **"Philip Pott " EP?**  
M<sup>r</sup> Stoe

015L pencil accounts against three days - **EP**

Jan 23 Bo<sup>t</sup> 1000 xxxxxxxxxxx  
for Feb<sup>y</sup> xxxxxxxxxxx  
Jan 24 Molly  
xxxxxxxx  
Jan 26 <sup>1</sup>/<sub>3</sub> of 1000 Consuls  
@ 71 7/8 -- xassxxxxxan

015R continuation of 015L against one day - **EP**

Jan 24 Becky goes too

016L pencil accounts against six days **EP**

Jan 31 Many xxxxxxxxxxxdoid  
Jax Hxxxxy xxxxxx<sup>25</sup>  
Feb 1 Sold xxxxxxxx 1000  
for xxxxxxxx 7 5/8  
Feb 2 xx to June xxxxxxxx 00  
Daxy xxxxxxxxxxxxxxx  
Feb 3 B/xx  
Feb 4 Bot of Pilliner  
Ri00 Feb<sup>y</sup> 702<sup>1</sup>/<sub>8</sub> **EP over EP?**  
Feb 5 Bot of J Head 1000  
@ 1/2 Feby



016R continuation of 016L against four days **EP**

Jan 31 *Crxxies Asxx 41xx*  
3900 -- *x4 5 1/2 6x* Sold 1  
Feb 1 1900 *Malcolm*  
5/8  
Feb 2 *Sold t<sup>o</sup> Cxxxk*  
18 . 11 . 6  
Feb 5 Molly *xxxxxxxxxxxxxx*  
*Selfxxetter*

017L pencil account against two days **EP**

Feb 8 Feb<sup>y</sup> *fxxxxxxx fxxxxx*  
Jissy @ *xxxxxxx*  
Feb 9 *xxxxxxx*

017R continuation of 017L against one day **EP**

Feb 8 A S S A

018L pencil account against two days

Feb 13 Bo<sup>t</sup> 4000 April  
@ 72<sup>1</sup>/<sub>8</sub>  
Feb 15 Sold 4000 April  
72<sup>1</sup>/<sub>2</sub>

020L ink account against one day

Mar 4 paid Fxxld<sup>x</sup> 1<sup>J</sup>6/ for  
*Watch Date*

021L ink account against one day

Mar 6 Sold 1000 @ 71 to Pilliner

023L ink account against one day

Mar 12 Sold 2000 @ 8<sup>5</sup>/<sub>8</sub>  
1500 M<sup>r</sup> Stoe -----  
500 : self

024L pencil note against one day

Apr 1 Molly has had  
7 Guineas --

024R continuation of 024L against one day

Apr 1 6 Guineas had before  
1 paid this day ---

025L      ink over EP for three days

Apr 3      *Give Mxxxoyeses --*  
              *p<sup>d</sup> 1 . 6 xxxxxxxxx*  
 Apr 4      *Bot 2000 6 x*  
              *1000 2000 69½*  
 Apr 5                *Greer*

026L      ink account against one day

Apr 13      Paid Molly  
              1. 1. 0  
              *Gu*   paid this week                **crossed out**

027L      ink account against two days **apparently one week too early**

Apr 17      *Gave Mol*                                **smudged and blotted out**  
 Apr 19                s d                                **probably to replace Apr 17**  
              Gave Molly 1/6                } **all**  
              this week                        } **crossed out**

028L      ink and EP against separate days

Apr 24      Gas                                        **incomplete for "Gave"?**  
 Apr 26      xxxxxxxxxxxxxxxxxxxxxxxxxxxx  
              xxxxxxxxxxxxxxx

028R      continuation of 027L against four days

Apr 24      xxxxxxxxxxxxxxxxxxxxxxx  
 Apr 25      xxxxxxxxxxxxxxxxxxxxxxx @ 70 x  
              xxxxxxxxx  
 Apr 26      1000 @ 71<sup>x</sup>/<sub>x</sub>  
 Apr 27      1000 69<sup>x</sup>/<sub>4</sub>

029L      EP account against one day

May 1      xxxxxxxxxxxxxxx  
              xxxxxxxxxxxxxxx

029R      continuation of 029L against one day

May 1      xxxxxxx



030L      ink over EP for six days

May 9      Bo<sup>t</sup> over Bo<sup>t</sup>                      **crossed out**  
                  11 /6 Tu's }                      **diagonally**

May 10      Bo<sup>t</sup> of Green 1000 - 71<sup>5</sup>/<sub>8</sub> over similar figures  
                  for July over xxxxxxx

May 12      Sold 1000 Marriot for over xxxxxxx  
                  May @ 71 --- over xxxxxxx Consols

May 13      Bo<sup>t</sup> 1000 of D<sup>o</sup> July over xxxxxxx  
                  @ 70<sup>7</sup>/<sub>8</sub> Consols

May 14      Bo<sup>t</sup> 1000 of Fletcher @  
                  72<sup>5</sup>/<sub>8</sub> --- Consols

030R      ink account against one day

May 10      Sold it by Fletcher  
                  @ 72 for July ---

031L      some ink over some EP for four days

May 16      xxxxxxxxxxxxxxxxxxxxxxxxxxxx  
                  xxxxxxxxxxxxxxxxxxxxxxxxxxxx

May 17      Bo<sup>t</sup> 2500 O S S A for July  
                  @ 68<sup>1</sup>/<sub>8</sub> - 70<sup>1</sup>/<sub>8</sub> Fry y

May 20      L s d  
                  Gave Molly 1. 1. 0 -  
                  on acc<sup>t</sup> G 0 ..1. 6 this  
                  week

May 21      xxxxxxxxxxxxxxxxxxxxxxxxxxxx  
                  xxxxxxxxxxxxxxxxxxxxxxxxxxxx

031R      ink continuation of 031L against one day

                 that is 2000 @a continuation of  
                  1 p<sup>r</sup> Cent and 500 at cont<sup>n</sup> of <sup>7</sup>/<sub>8</sub>  
                  p<sup>r</sup>Cent --

032L      ink against one day

May 22      Molly 1<sup>D</sup>/

033L      EP against three days

May 29      Molly 1<sup>D</sup>/

May 30      xxxxxxxxxxxxxxxxxxxxxxxxxxxx

May 31      xxxxxxxxxxxxxxxxxxxxxxxxxxxx

035L      EP against one day

Jun 16      xxxxxxxxxxxx

036L pencil and ink against one day **annotated**

|        |   |  |
|--------|---|--|
| Jun 22 | Lottery?                                    | <b>Writer A or B, referring to ...</b> |
| Jun 23 | Sold Fletcher                               |  |
|        | 20 Tick <sup>s</sup> for drawing @ 14:16:-- |  |
|        | 20 ge ----- 14:15: 6                        |  |

037L ink account against two days

|        |                                   |
|--------|-----------------------------------|
| Jun 27 | Sold M <sup>r</sup> Fletcher      |
|        | 40 Tickets @ 14:16:--             |
| Jul 1  | Sold 20 Tick <sup>s</sup> half of |
|        | 50 with M <sup>r</sup> Beck for   |
|        | Drawing                           |

038L EP against three days

|       |                    |                        |
|-------|--------------------|------------------------|
| Jul 4 | Sold xxxxxxxxx     |                        |
|       | 40 xxxxxxxxxxxxx   |                        |
| Jul 7 | xxxxxxxxxxxxxxxxxx | <b>for three lines</b> |
| Jul 8 | xxxxxxxxxxxxxxxxxx | <b>for three lines</b> |

044R EP against three days

|        |  |
|--------|--|
| Aug 14 | N <sup>o</sup> T 5000                        |
|        | 71 <sup>1</sup> / <sub>8</sub> xxxxxxxxxxxxx |
| Aug 15 | Cxxxxxxx Cxxxxxx                             |
| Aug 16 | M <sup>r</sup> xxxxxx                        |

048L EP against two days

|        |                                      |
|--------|--------------------------------------|
| Sep 13 | Sold 50 Tickets for Oct <sup>r</sup> |
|        | @ 15. 0 .6 B <sup>t</sup> 75 for     |
| Sep 14 | Nov <sup>r</sup> @ 15. 2. 0          |

051R EP against four days

|       |                    |                      |
|-------|--------------------|----------------------|
| Oct 2 | xxxxxxxxxxxxxxxxxx |                      |
| Oct 3 | xxxxxxxxxxxxxxxxxx | <b>for two lines</b> |
| Oct 4 | xxxxxxxxxxxxxxxxxx | <b>for two lines</b> |
| Oct 5 | xxxxxxxxxxxxxxxxxx |                      |

055L ink account against two days

|        |  |
|--------|--|
| Oct 30 | L  |
|        | M <sup>r</sup> Stoe owes 30 -----                      |
| Nov 2  | Bo <sup>t</sup> 2000 @ 5 <sup>1</sup> / <sub>2</sub> L |
|        | 30 profits   |

055R ink continuation of 055L against one day

|       |                       |
|-------|-----------------------|
| Nov 2 | Sold 2000 Consols Baz |
|       | @ 77 ---              |



056L      ink account against one day

Nov 8      White Bear Newport  
              Market . Walker --

057L      ink and EP account against four days

Nov 13      Mason Sold 1000 Will<sup>m</sup>  
                 Jan<sup>y</sup> 76<sup>3</sup>/<sub>4</sub> --

Nov 14      Bagwill sold 2000  
                 Jan<sup>y</sup> 76<sup>0</sup>/<sub>4</sub> ----

Nov 15      xxxxLx Bearxxxxxxxx  
                 Bag 1000 @ 76<sup>1</sup>/<sub>2</sub>  
                 Sold

Nov17      Sold 1000 Jones xxxxxx  
              xxxxxx11<sup>3</sup>/<sub>4</sub> --Stoe <sup>1</sup>/<sub>2</sub>

**ink reinforcing pencil over EP**  
**ink reinforcing pencil over EP**  
**EP only**  
**EP only**

057R      ink and EP account against six days

Nov 13      xxxxxxxx xxxxxxxx

Nov 14      } Bought 1000  
                 } for Jan<sup>y</sup>@75<sup>1</sup>/<sub>2</sub>

Nov 15      } Bo:<sup>L</sup>2000 76<sup>1</sup>/<sub>8</sub> --

**top line over unreadable EP**

Nov 16      Bo<sup>t</sup> 1000 Morgan  
                 by Hope : 75<sup>1</sup>/<sub>4</sub>

Nov 17      -----  
                 12 . 10 --  
                 12 . 10 .  
                 12 . 10 .  
Nov 18      -----  
                 37: 10:-

058L      pencil account against two days

Nov 20      Sold 2000 for Jan<sup>y</sup> -  
                 @ 75 <sup>3</sup>/<sub>8</sub> - 75 <sup>5</sup>/<sub>8</sub> -

Nov 21      Charge M<sup>r</sup> . Rankin

061R      ink account across two days

Dec 11      Borr<sup>d</sup> of M<sup>r</sup>

Dec 12      Stoe 1 . 1 . 0 -

062R

ink account across four days

|        |                          |                  |                       |
|--------|--------------------------|------------------|-----------------------|
| Dec 18 | Gaz <sup>n</sup>         | 3 . 6 . -        |                       |
|        | General                  | 3 . <u>6</u> . - |                       |
|        | Packet                   | 5 . 6 . -        |                       |
|        | Gazellen                 | 3 . <u>6</u> .   |                       |
|        | Port --                  | 1 . 6 . -        |                       |
|        | Gazellens <del>==</del>  | 13 . 9           | final "s" crossed out |
|        | Pub Abc <sup>r</sup>     | 6 . 6 .          | UIN                   |
|        |                          |                  | insertion to right    |
|        |                          | Ss17.9           | UIN                   |
|        | M <sup>g</sup> Chronicle | 5 : 9 -          |                       |
| Dec 21 |                          | 2 . 3 . 6        |                       |

063L

ink accounts across two days and EP across three days

|        |                      |
|--------|----------------------|
| Dec 25 | 6 . 1 . 10. Mr Stoe  |
|        | <u>revenue</u>       |
| Dec 26 | 5 . 0 . 0. Mr Stoe   |
|        | <u>pounds</u> owes   |
| Dec 29 | xxxxxxxxxxxxxxxxxxxx |
|        | xxxxxxxxxxxxxxxxxxxx |
| Dec 30 | xxxxxxxxxxxxxxxxxxxx |
|        | xxxxxxxxxxxxxxxxxxxx |
| Dec 31 | xxxxxxxxxxxxxxxxxxxx |
|        | xxxxxxxxxxxxxxxxxxxx |

063R

ink names across two days, EP across three days      **two days at foot cut out**

|        |                      |
|--------|----------------------|
| Dec 25 | <u>Yarmouth</u>      |
| Dec 26 | <u>Angell --</u>     |
| Dec 27 | xxxxxxxxxxxxxxxxxxxx |
| Dec 28 | xxxxxxxxxxxxxxxxxxxx |
|        | xxxxxxxxxxxxxxxxxxxx |
| Dec 29 | xxxxxxxxxxxxxxxxxxxx |

064L

EP accounts for seven lines

**foot cut away**

Wedxxx -  
Bo<sup>t</sup> 3000 10xxxx46<sup>3</sup>/<sub>8</sub> --  
Sold 6000 0.xx 71<sup>3</sup>/<sub>8</sub>  
      73<sup>5</sup>/<sub>8</sub>  
      73<sup>5</sup>/<sub>8</sub>  
      147<sup>1</sup>/<sub>4</sub>  
Amx @ o pen W<sup>o</sup>  
xxx                    C

**cut made after erasure? was ink?**

064R

printed page with handwritten pencil "M" above title



093R

ink over EP

|  |   |
|--|---|
| <u>Thomas Greenwood</u>                        | <b>over</b> xxxxxxxxxxxxxxxx                |
| <u>Hillingdon W<sup>o</sup> and h Children</u> | <b>over</b> xxxxxxxxxxxxxxxx                |
| <u>was freeman of the</u>                      | <b>over</b> xxxxxxxxxxxxxxxx                |
| <u>Vintners</u>                                | <b>over</b> xxxxxxxxxxxxxxxx                |
| <u>Mr Bates was her friend.</u>                | <b>over</b> xxxxxxxxxxxxxxxx                |
| <u>1. 1. 0 - Christmas</u>                     | <b>over</b> xxxxxx 8/1 2 x 8                |
| <u>1: 1.11 Easter</u>                          |   |
| <u>--- 12 -- a Year</u>                        | <b>over</b> Sept <sup>r</sup> xxx 8/1 2 x 8 |
| <u>-----</u>                                   | <b>over</b> Dxxxxxx 8/1 2 11                |
|  | xxxxxxxxxxxxxxxxxx                          |
|  | xxxxxxxxxxxxxxxxxx                          |

094L

two ink lines over and above EP above sketch

|   |   |
|---|---|
| <u>Jany Acc<sup>t</sup> B<sup>t</sup></u>     | <b>over</b> <i>Jany Account</i>                               |
| <u>2000 Bag - 76<sup>1</sup>/<sub>8</sub></u> | <b>over</b> xxx 3000 xxx @ 67                                 |
|   | xxxx  |
|   | Bo <sup>t</sup> 1000 J.Cofee @ 72 <sup>1</sup> / <sub>8</sub> |
|   | xxxx 1000 do h. xxx 68 <sup>7</sup> / <sub>8</sub>            |
|   | xxxxxxxx thxxxx   |
|   | xxxxxxxxxxxxxxxxxx  |
|   | xxxxxxxxxxxxxxxxxx  |
|   | Bo <sup>t</sup> 1000 @71 <sup>7</sup> / <sub>8</sub> Barriman |
|   | xxxxxxx @71 <sup>1</sup> / <sub>2</sub> -Money                |
|   | in my name  |
|   | -----   |
|   | <b>sketch here - part of floorplan?</b>                       |
|   | <b>6 Chaldeans written upside down</b>                        |

094R

four ink lines over and above EP

|   |                              |
|---|------------------------------|
| <u>Sold --</u>  |                              |
| <u>2000 Bug ----- 76<sup>3</sup>/<sub>4</sub></u>             |                              |
| <u>1000 - d<sup>o</sup> ----- 76<sup>1</sup>/<sub>2</sub></u> | <b>over</b> xxxxxxxxxxxxxxxx |
| <u>1000 Mason ----- 76<sup>1</sup>/<sub>2</sub></u>           | <b>over</b> xxxxxxxxxxxxxxxx |
|   | Sold 1000 xxxxxxxx           |
|   | Sold 1000 xxxxxxxx           |
|   | Sold 1000 xxxxxxxx           |
|   | xxxxxxxxxxxxxxxxxx           |
|   | xxxxxxxxxxxxxxxxxx           |
|   | xxxxxxxxxxxxxxxxxx           |
|   | Mustard                      |
|   | Playbook                     |

095L

ink over EP

April

Bo<sup>t</sup> 4000 72<sup>1</sup>/<sub>8</sub>

Bo<sup>t</sup> 3000 Pill 72<sup>1</sup>/<sub>8</sub>  
2000 Cope 72<sup>1</sup>/<sub>8</sub>

}

all ink reinforces unerased pencil  
cancelled with single diagonal stroke

horizontal ruling

April Acc<sup>t</sup>

B<sup>t</sup>

4000 . @ 70<sup>5</sup>/<sub>8</sub> --2825--

~~3000xxxxx70<sup>5</sup>/<sub>8</sub>~~

2000 . Cope 70<sup>5</sup>/<sub>8</sub> 1412.10-

~~2000 . Bxxxx70<sup>3</sup>/<sub>8</sub>~~

1000 d<sup>o</sup> 70<sup>1</sup>/<sub>4</sub> 702.10-

2000 d<sup>o</sup> 69 --1380 --

6320 --

706 5

4 690

1825 -- 690

1380 21:13:3

Bagwill 2.10 . --

24 : 3 : -3

vigorous deletion

ink figure reinforces unerased pencil

vigorous deletion

ink figure reinforces unerased pencil

ink figure reinforces unerased pencil

ink overlaps unrelated pencil

= sum

095R

ink over EP

Sold 4000 72<sup>1</sup>/<sub>2</sub>

1000 -- 72<sup>5</sup>/<sub>8</sub>

1000 72<sup>3</sup>/<sub>4</sub>

1000 -- 72<sup>7</sup>/<sub>8</sub>

}

ink reinforces unerased pencil,  
apart from small differences

cancelled with single diagonal stroke

horizontal ruling

Sold 4000 --- 71 -

2840

711 . 5 . 1000 . 71<sup>1</sup>/<sub>8</sub> Garrett

707 . 10 1000 . 70<sup>3</sup>/<sub>4</sub> Fry

708 . 15 1000 . 70<sup>7</sup>/<sub>8</sub> .d<sup>o</sup>

710 . . 1000 . 71 --- Pilliner

700 -- 1000 . 70. J Cope

inserted into left margin

6377 :10

6320 ----

57 . 10 : -----

710

1 . 8 . 3 --Cons<sup>n</sup>

57:10

15 . 15 . 0 Tea

82. 3. 3

74 : 13 3

2.10 . --

7 . 10 ----

84 :13 :3

59 . 10

82 : 3 : 3

25 : 3 . 3

59 : 10 :----

21 : 13 3

lower half missed edge of paper!

096L

ink over EP

Com<sup>n</sup> Copy Account  
 Cap<sup>t</sup> Cullen . 2100 -----  
 Heylyn ----- 70---  
 OAS

Edington 100-:---"  
 T<sup>o</sup> Starbuck 2/--  
 2270 .

1. 2 -  
 5: 6 ---  
 9

-----  
 1 : 1 . 3

-----  
 706 : 5 ----- 695 ----  
 707: 10 . ----- 693 : 15

-----  
 1413 - 15 : 1388 : 15 ---  
 1388 -- 15

-----  
 . 25 : ---Pill<sup>r</sup>  
 ---17:10 : Stoe --- 9<sup>1/4</sup>  
 3 . 2 . 6 d 8<sup>5/8</sup>

-----  
 5/8  
 6 :17 :6 Tannr 70<sup>5/8</sup> 6 . 5  
 7. 10 . d<sup>o</sup> 9<sup>1/4</sup> -

-----  
 59 : 10 --- 1 . <sup>3</sup>/<sub>8</sub>

-----  
 13 . 15

-----  
 6 .17 . 6

096R

ink over EP

Pill .B<sup>t</sup> 1000 --- 70<sup>5/8</sup>  
 do 1000 .--70<sup>3/4</sup>

-----  
 Sold 1000 @ 69.<sup>1</sup>/<sub>2</sub>  
 1000 @ 69<sup>3</sup>/<sub>8</sub>

-----  
 Navy Bill  
 instead of *len*

**vertical gap**

9<sup>3</sup>/<sub>8</sub>  
 8<sup>5</sup>/<sub>8</sub>

-----  
 3 . 10---

-----  
 3 . 15 --  
 -----



1

..

17 .10-----

3 . 15

over lay into daily

-----:-----

21 . 5

**"5" corrected from "0"**

097L

ink over pencil

Com<sup>p</sup> for May --

S

over

420

Williams 100 ---

1. 3

over

210

over

----

do Exchequer Bill : --: 6

over

630 ---

over

-----

over

52

2 .12. 6

over

5

over

-----

B475 -

over

12 . 2: 6

Newnham

over

lower half blank but for:  
upper half of circle with  
radius up from centre

097R

ink over pencil (ink reinforcing pencil)

Turnpike -- 3<sup>d</sup> 80

6

-----

Rumford 2 : 7 480

Turnpike = 6 50

-----

Boots --- 1 --24000

960

-----

Ingalula 1 : 2 24960

-----

-----5 ----

-----17 ----

-----/1 ----

-----1/1 ----

-----

3 3 6 ---

--- 10 - 6 Waters

2 3 . --6 Harwich **"3" = "2" + curl**

2 . 6

1 . 6 Boots

4 Maid **or "Ward"?**

1 . 2

2 . 6

-----

6 . 9 . 2

098L      all EP

xxxxxxx  
xxxxxxx  
xxxxxxx  
xxxxxxx

-----  
he states xxxxxxxx *U*  
In great future Saving  
Axxx of xxxxxxxxxx  
*Xe*

-----  
taxes are to be raxxd  
for 100,000 £ to make  
up *to* Milliner

098R      all EP

2 of 10,000  
2 of 3,000  
3 of 2,000  
5 of 1,000  
10 -- 500  
30 -- 100  
60 -- 50            50  
100 -- 20           6  
10733 10           300  
2021   Blank

-----  
33066  
-----

*Just* Drawn            1000 £  
last   d<sup>o</sup>                1000<sup>x</sup>

099L      pencil over EP

from 17 to 20 China  
*Me* this

-----  
3.0 ½ . Single 65 --  
1 7 . ----- 70 with *Duty*

-----  
payments            *For*  
5 p<sup>r</sup> C<sup>t</sup>                6 April  
10 --                   24 May  
25    --                22 Jun  
25    --                10 July -  
35    --                1 Aug<sup>t</sup>  
                             --£ 0 15 . 6  
*Draw* 7 Aug .           1. 11 . 6  
10 . 13 . 6               2 . 7 . -  
             6 . 6               1.12 --  
11    0    0               - 14 --

099R ink and pencil over EP

1765  
 11000 S  
 6250 M 3 -  
 4656 S 11  
 18300 B  
 43661 - Cony  
 4  
 The Sixxed is 10 Ships in  
~~85~~  
 -----  
 6 9 7  
 Hadleigh ----- 0 11: 0  
 Horsler ---- " --8  
 -----  
 16.9  
 1.6  
 Bury 3  
 -----  
 6:8 1. 7 : 11  
 1. 7 11  
 Hadleigh ----- --: 11.: 8  
 1. 1. 0  
 3 --  
 Ambridge --6-- 1 : 12. --  
 -----  
 1  
 -----10 . 13::6

**"11" corrected from "12"**

100L all EP

*M<sup>r</sup> Angelloxxxxxxxxxxxxxxxx*  
*xxxxxxxxxxxxxxxxxxxxxxxxxxxx*  
*60000 Sxxpxxxxxxxxxxxxxxxx*  
*20000 xxxxxxxxxxxxxxxxxxxx*  
*25000 Hylersxxxxxxxxxxxxxx*  
*45000 Cargxx Jxxkay*

100R all EP

No Hylers ----  
 No Sxxxxday ----  
 xxxxxxxxxxxxxxxxxxxxxxxxx  
 700 Concert -----  
 15000 Sxxxxx -----  
 Juli 15000  
 India - xxxxxxxxxxxxxxxx  
 -----  
*M<sup>r</sup> Callendar*  
*impressed*  
*xxxxxx Clark*

**or "M<sup>r</sup>" at start**  
**or "M<sup>r</sup>" at start**



101L pencil over EP

xxxxxxxxxxxxxxxxxxxxxxxx  
 xNo 11xxxxxxxxxxxxxxxx  
 xxxxxxxxxxxxxxxxxxxxxxx  
 Cxxx8xxxxxxxxxxxxxxxx  
 xxxM<sup>rs</sup> Dunfoy  
 xxxxxxxxxxxxxxxxxxxxxxx  
 xx10xxxxxxxxxxxxxxxx  
 x210 first xxxxxxxxxxx0x0  
 -----  
 xxxxxxxx

101R ink (generally smaller lettering than elsewhere)

Bankers 433 ----- " \_"  
 50 ---- " \_ " India Scripts  
 70 ---- " \_ " diff O A's M Sprat  
 852. 10 : --  
 190 --- --- 11 Stoe  
 1100  
 -----  
 1595 : 10 \_"  
 30 " . --- 77 0 0 Boy  
 -----  
 1625 - -" \_ " 77 0 0  
 5 5 0  
 -----  
 85 2/5 0  
 /10/  
 2000 -  
 77  
 16 0 00  
 140 0 0  
 -----  
 1540/00  
 1470/  
 -----  
 70

S  
 S

pencil